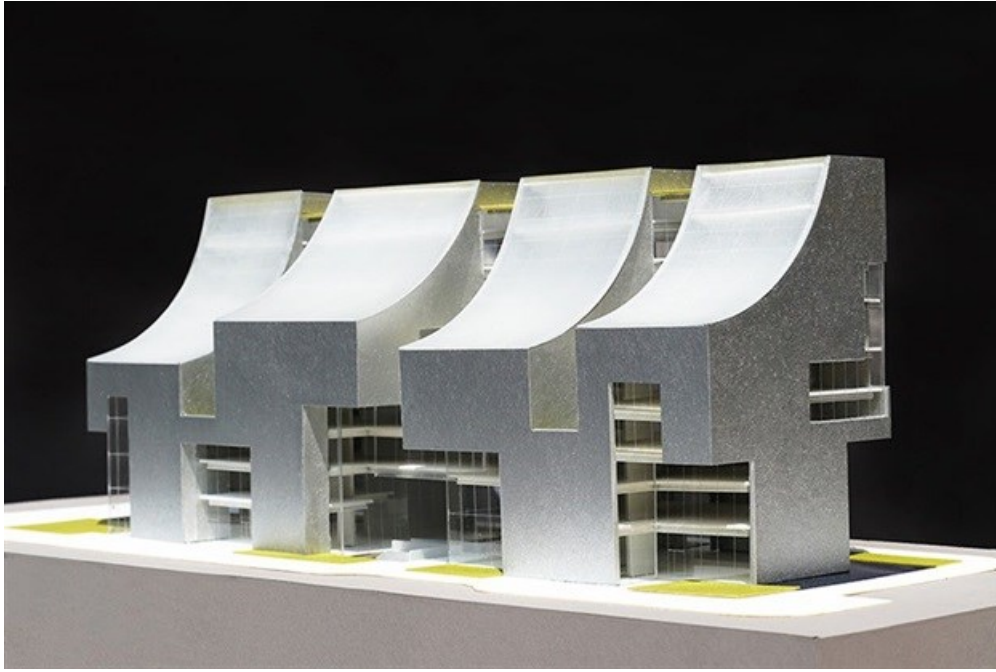


Steven Holl Architects releases design for a new hybrid building in Beijing

Steven Holl Architects has unveiled the design for a new hybrid building for CIFI Group in Fengtai, Beijing which will consist of offices and retail spaces. The new mixed-use complex will be the firm's second building in the city.



All images courtesy of Steven Holl Architects

Unveiling with only three images, the design scheme is based on five central points: light, structure, urban porosity and gardens, open offices and ecology and gardens.

The building will feature varying qualities of light, giving this office and retail building a unique geometry and shape dynamic spaces. The north light curves — in response to code setback requirements — provide soft and evenly diffused light to the interiors on the upper floors. On the south facade, sculpted cuts bring light to the office spaces and to retail below grade.

The north light curves will be developed together with Okalux. The structure consists of four layers: a glass exterior laid over truss, secondary tubes, and an interior layer of translucent barrisol or newmat.



All images courtesy of Steven Holl Architects

Composed of four interlocking volumes, the exterior concrete structure of the building helps to allow for flexibility in interior space. The top levels of the building will house flexible open office space. The aluminum-painted concrete will be OSB formed, contrasting the smooth, matte finish of the north light curves.

The retail at grade is shaped around reflecting pools and gardens, giving the building an inspiring urban porosity and a pedestrian-friendly scale. Rainwater recycling in the pools and state-of-the-art ecological systems are envisioned to amplify the sustainable quality of the building.

Article [*originally published*](#) on [*World Architecture Community*](#).

For more, visit: <https://www.bizcommunity.com>