

Climate change will make rice less nutritious, putting millions of the world's poor at risk

By [Kristie Ebi](#)

13 Jun 2018

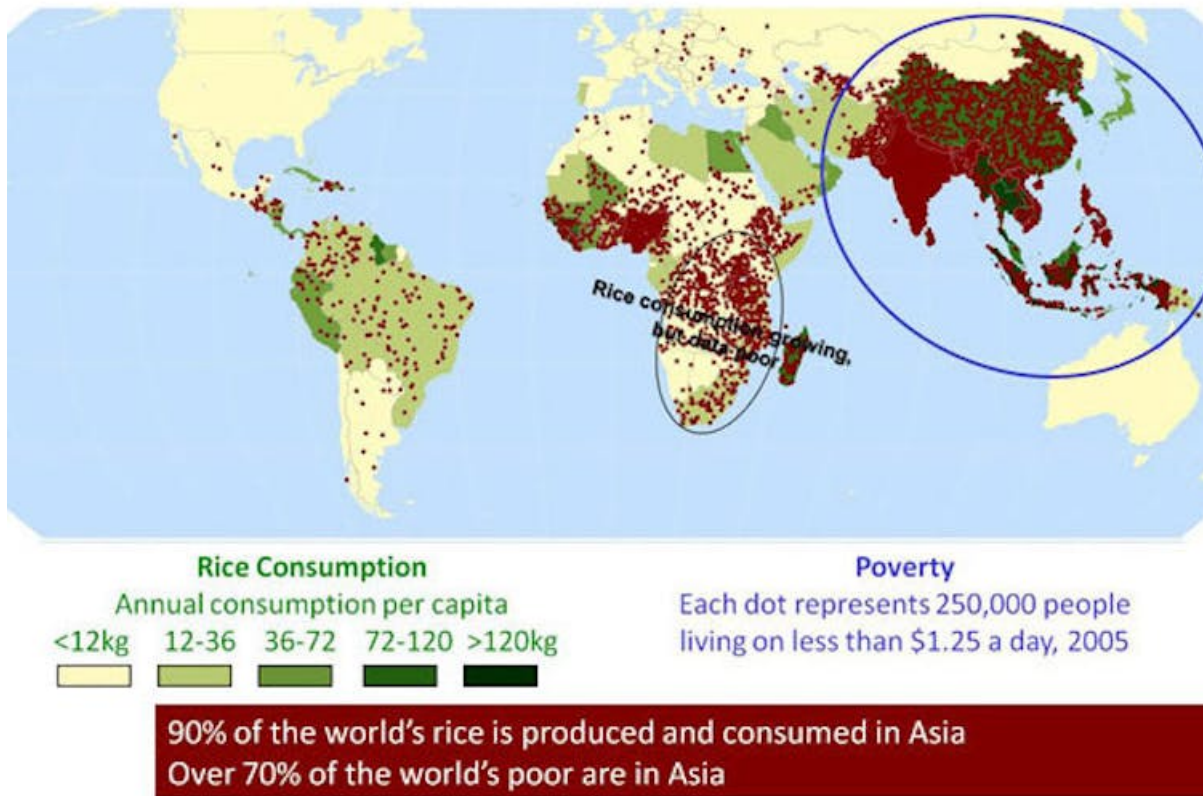
Rice is the primary food source for more than three billion people around the world. Many are unable to afford a diverse and nutritious diet that includes complete protein, grains, fruits and vegetables. They rely heavily on more affordable cereal crops, including rice, for most of their calories.



ImageParty via [pixabay](#)

My research focuses on health risks associated with climate variability and change. In a [recently published study](#), I worked with scientists from China, Japan, Australia and the United States to assess how the rising carbon dioxide concentrations that are fueling climate change could alter the nutritional value of rice. We conducted field studies in Asia for multiple genetically diverse rice lines, analysing how rising concentrations of carbon dioxide in the atmosphere altered levels of protein, micronutrients and B vitamins.

Our data showed for the first time that rice grown at the concentrations of atmospheric carbon dioxide scientists expect the world to reach by 2100 has lower levels of four key B vitamins. These findings also support research from other field studies showing rice grown under such conditions [contains less protein, iron and zinc](#), which are important in fetal and early child development. These changes could have a disproportionate impact on maternal and [child health](#) in the poorest rice-dependent countries, including Bangladesh and Cambodia.



Many of poorest regions in Asia rely on rice as a staple food.

[IRRI](#), [CC BY-NC-SA](#)

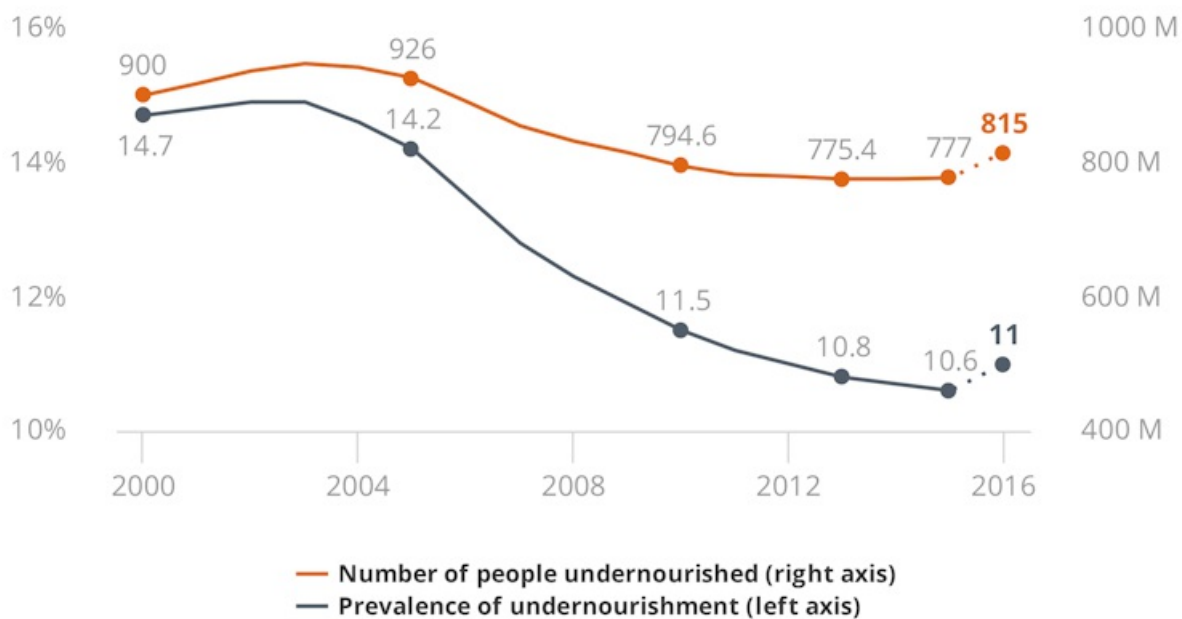
Carbon dioxide and plant growth

Plants obtain the carbon they need to grow primarily from carbon dioxide in the atmosphere and draw other required nutrients from the soil. Human activities – mainly fossil fuel combustion and deforestation – raised atmospheric CO₂ concentrations from about 280 parts per million during pre-industrial times to [410 parts per million today](#). If global emission rates continue on their current path, atmospheric CO₂ concentrations could reach over 1,200 parts per million by 2100 (including methane and other greenhouse gas emissions).

Higher concentrations of CO₂ are generally acknowledged to stimulate plant photosynthesis and growth. This effect could make the cereal crops that remain the world's most important sources of food, such as rice, wheat and corn, more productive, although recent research suggests that predicting impacts on plant growth is [complex](#).

Concentrations of minerals critical for human health, particularly iron and zinc, do not change in unison with CO₂ concentrations. Current understanding of plant physiology suggests that major cereal crops – particularly rice and wheat – respond to higher CO₂ concentrations by synthesising more carbohydrates (starches and sugars) and less protein, and by reducing the quantity of [minerals in their grains](#).

The number of people undernourished in the world has been on the rise since 2014, reaching an estimated 815 million in 2016



NOTE: Prevalence and number of undernourished people in the world, 2000–2016. Figures for 2016 are projected estimates. SOURCE: FAO.

After steadily declining for over a decade, global hunger appears to be on the rise, affecting 11 percent of the global population.

[FAO](#), [CC BY-ND](#)

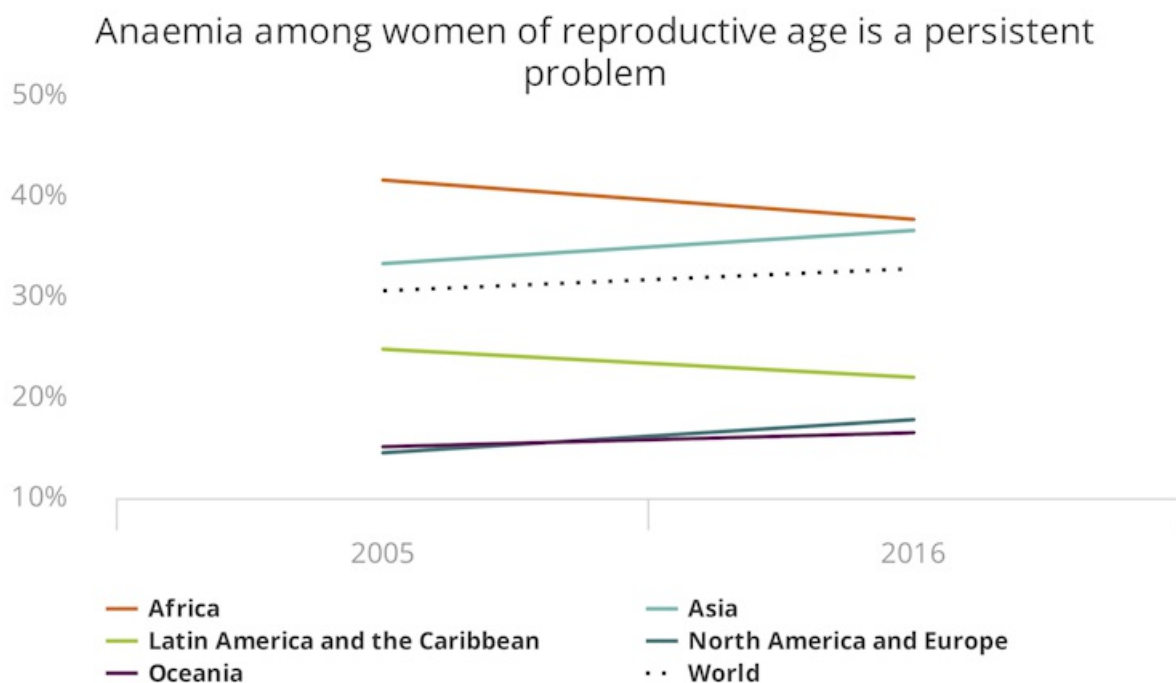
The importance of micronutrients

Worldwide, approximately 815 million people worldwide are [food-insecure](#), meaning that they do not have reliable access to sufficient quantities of safe, nutritious and affordable food. Even more people – approximately two billion – have [deficiencies of important micronutrients](#) such as iron, iodine and zinc.

Insufficient dietary iron can lead to iron deficiency anemia, a condition in which there are too few red blood cells in the body to carry oxygen. This is the most common type of anemia. It can cause fatigue, shortness of breath or chest pain, and can lead to serious complications, such as heart failure and developmental delays in children.

Zinc deficiencies are characterized by loss of appetite and diminished sense of smell, impaired wound healing, and weakened immune function. Zinc also supports growth and development, so sufficient dietary intake is important for pregnant women and growing children.

Higher carbon concentrations in plants reduce [nitrogen amounts in plant tissue](#), which is critical for the formation of B vitamins. Different B vitamins are required for key functions in the body, such as regulating the nervous system, turning food into energy and fighting infections. Folate, a B vitamin, reduces the risk of birth defects when consumed by pregnant women.



NOTES: Prevalence of anaemia in women of reproductive age, 2005–2016. For country coverage for each region see Notes for Annex 1 (back cover fold-out).
SOURCE: WHO Global Health Observatory, 2017.

Anemia affects one-third of women of reproductive age globally – or about 613 million women.

[FAO](#), [CC BY-ND](#)

Significant nutrition losses

We carried out our field studies in China and Japan, where we grew different strains of rice outdoors. To simulate higher atmospheric CO₂ concentrations, we used [Free-Air CO₂ Enrichment](#), which blows CO₂ over fields to maintain concentrations that are expected later in the century. Control fields experience similar conditions except for the higher CO₂ concentrations.

On average, the rice that we grew in air with elevated CO₂ concentrations contained 17% less vitamin B1 (thiamine) than rice grown under current CO₂ concentrations; 17% less vitamin B2 (riboflavin); 13% less vitamin B5 (pantothenic acid); and 30% less vitamin B9 (folate). Our study is the first to identify that concentrations of B vitamins in rice are reduced with higher CO₂.

We also found average reductions of 10% in protein, 8% in iron and 5% in zinc. We found no change in levels of vitamin B6 or calcium. The only increase we found was in vitamin E levels for most strains.



Rice within the octagon in this field is part of an experiment designed to grow rice under different atmospheric conditions. Rice grown under carbon dioxide concentrations of 568 to 590 parts per million is less nutritious, with lower amounts of protein, vitamins and minerals.

Dr. Toshihiro HASEGAWA, National Agriculture and Food Research Organization of Japan, [CC BY-ND](#)

Worsening micronutrient deficiencies

At present, about 600 million people — mostly in Southeast Asia — get more than half of their daily calories and protein directly from rice. If nothing is done, the declines we found would likely worsen the overall burden of undernutrition. They also could affect early childhood development through impacts that include worsened effects of diarrheal disease and malaria.

The potential health risks associated with CO₂-induced nutritional deficits are directly correlated to the lowest overall gross domestic product per capita. This suggests that such changes would have serious potential consequences for countries already struggling with poverty and undernutrition. Few people would associate fossil fuel combustion and deforestation with the nutritional content of rice, but our research clearly shows one way in which emitting fossil fuels could worsen world hunger challenges.

How could climate change affect other key plants?

Unfortunately, today there is no entity at the federal, state or business level that provides long-term funding to evaluate how rising CO₂ levels could affect plant chemistry and nutritional quality. But CO₂-induced changes have significant implications, ranging from medicinal plants to nutrition, food safety and food allergies. Given the potential impacts, which may already be occurring, there is a clear and urgent need to invest in this research.

It is also critical to identify options for avoiding or lessening these risks, from traditional plant breeding to genetic modification to supplements. Rising CO₂ concentrations are driving climate change. What role these emissions will play in

altering all aspects of plant biology, including the nutritional quality of the crops that we use for food, feed, fiber and fuel, remains to be determined.

This article was originally published on [The Conversation](#). Read the [original article](#).

ABOUT THE AUTHOR

Kristie Ebi, Professor of Global Health and Environmental and Occupational Health Sciences, *University of Washington*

For more, visit: <https://www.bizcommunity.com>